

DVD CAM Software Support Center

DZ-MV350/380 Software Tutorials

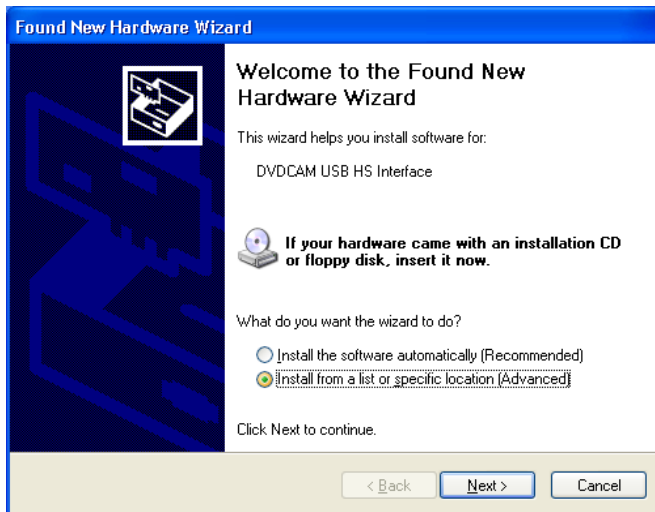
How to Install the USB Driver

Installing the USB Driver

1. Close any running applications. If any anti-virus software is running, deactivate the software during the installation.
2. Insert the DVDCAM Software CD-ROM into the CD-ROM drive and power on the DVDCAM to the **VIDEO** position.
3. Connect the DVDCAM to the PC using the USB cable. Be sure to connect to an unused USB port on the back of your PC. The red **ACCESS** indicator of DVDCAM will turn off and will be followed by a beeping sound. At this time, the **ACCESS** indicator, LCD, and viewfinder are all off.

Note When using USB ports on a USB hub or the front panel of the PC, the DVDCAM may not be recognized.

4. For Windows XP/2000, the **Found New Hardware Wizard** dialog box appears on your PC. For Windows Me/98 Second Edition, the **Add New Hardware Wizard** dialog box appears. Follow the instructions by the Operation System you use.



Windows XP



Windows 98 Second Edition

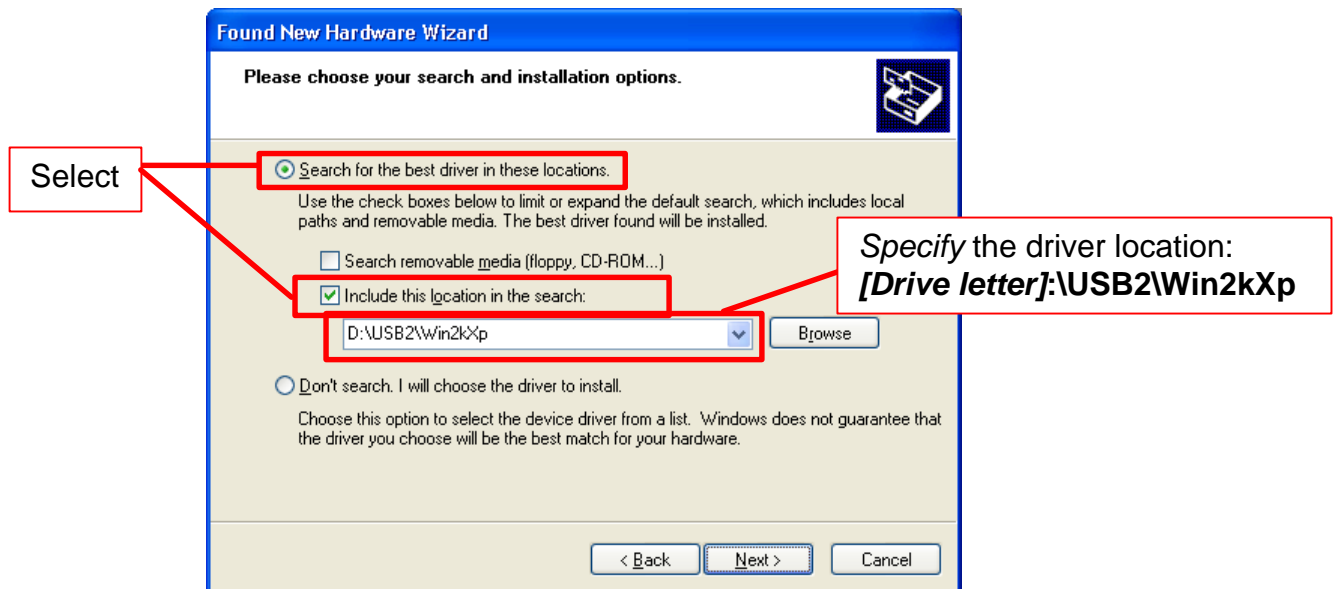
- Tip** If the **Found New Hardware Wizard** or **Add New Hardware Wizard** dialog box does not appear, perform any of the following procedures (a. to d.) and redo the above steps **1** to **4**.
- a. Power off the PC and DVDCAM,
 - b. Remove the DVD-RAM/DVD-R disc or SD memory card.
 - c. Power on the DVDCAM to the **PHOTO** position.
 - d. Use another USB port on the PC.

Windows XP

5. Select **Install from a list or specific location (Advanced)**, and then click **Next**.

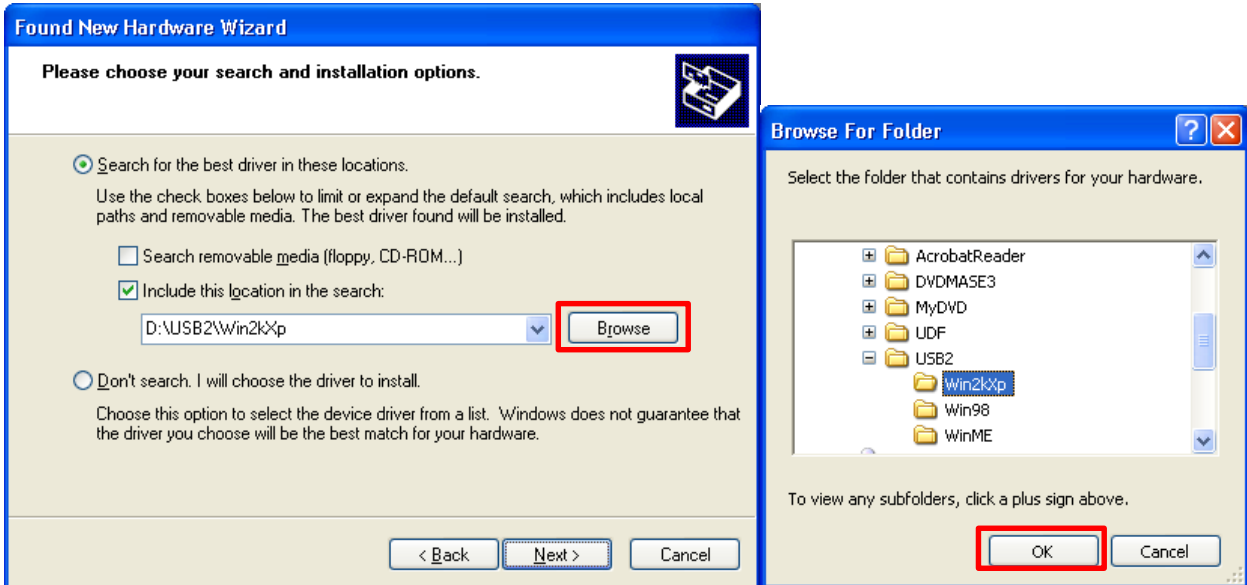


6. Confirm that **Search for the best driver in these location, Include this location in the search**, and the driver location **USB2Win2kXp** following the CD-ROM drive letter have been specified (e.g. **D:\USB2Win2kXp**). If the wrong driver location has been specified, click the **Browse** button to correct it to **USB2Win2kXp**.

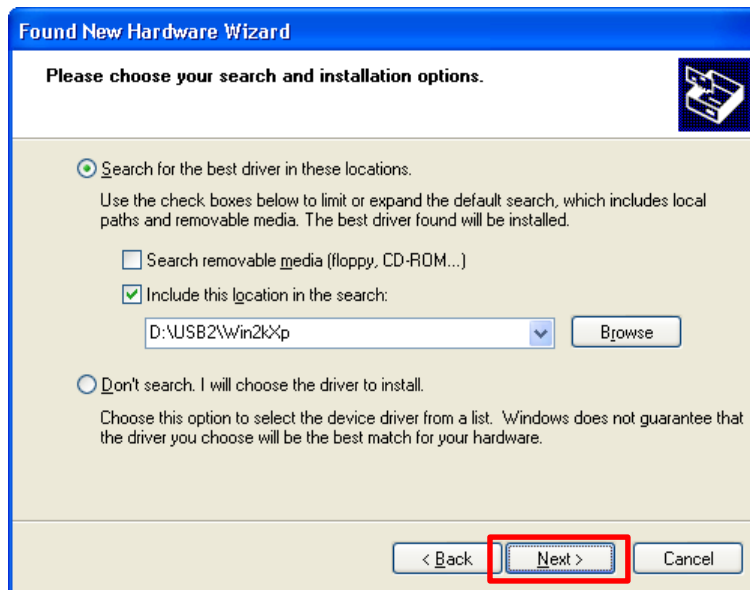


Tip Specifying the Driver Location **USB2\Win2kXp**

1. Click the **Browse** button
2. In the **Browse for Folder** dialog box, specify the **Win2kXp** under the **USB2** folder from the DVDCAM Software CD-ROM, and click **OK**



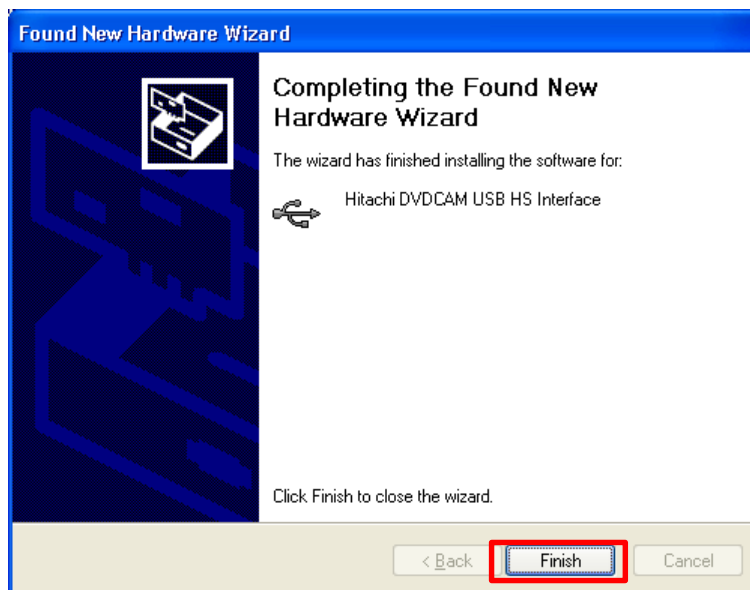
7. Click **Next**. The USB driver installation will then start.



8. The **Hardware Installation** dialog box with a message “**The software you are installing for this hardware: Hitachi DVDCAM USB HS Interface has not passed Windows Logo testing to verify its compatibility with Windows XP**”, click **Continue Anyway**.

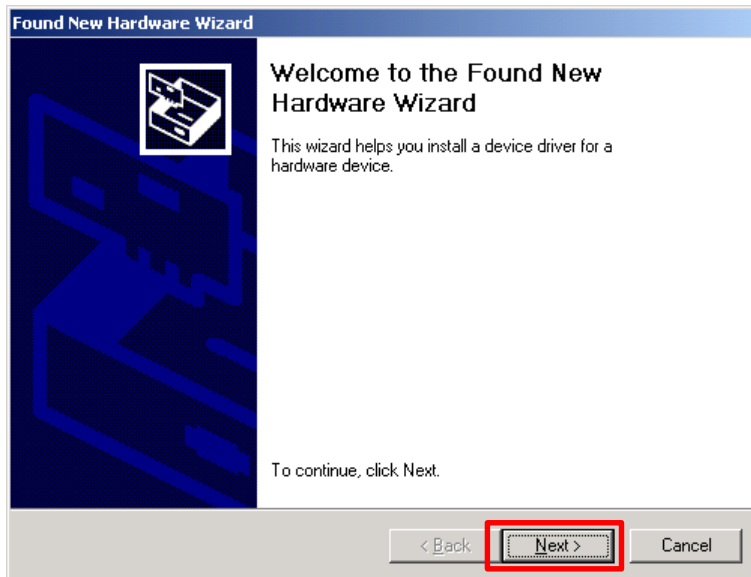


9. When the USB driver installation finishes, click the **Finish** button.

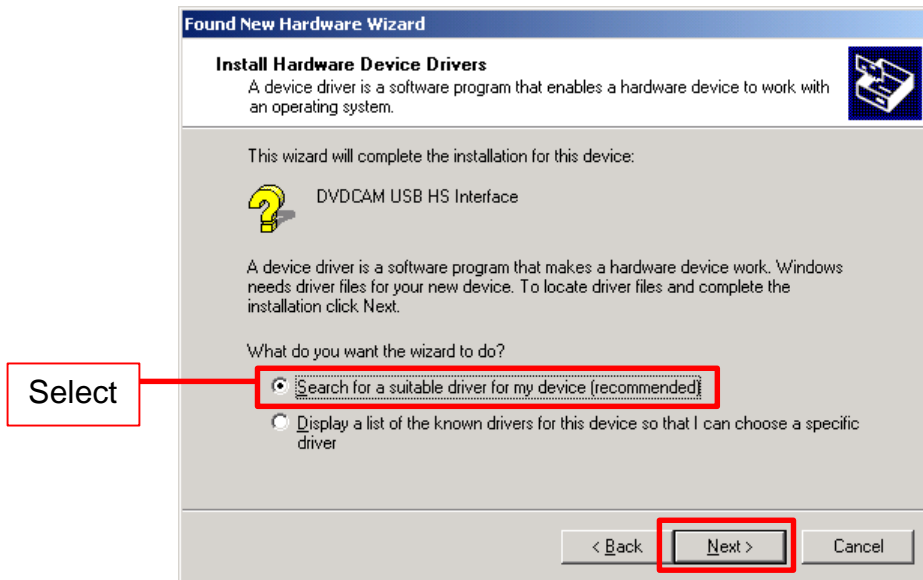


Windows 2000

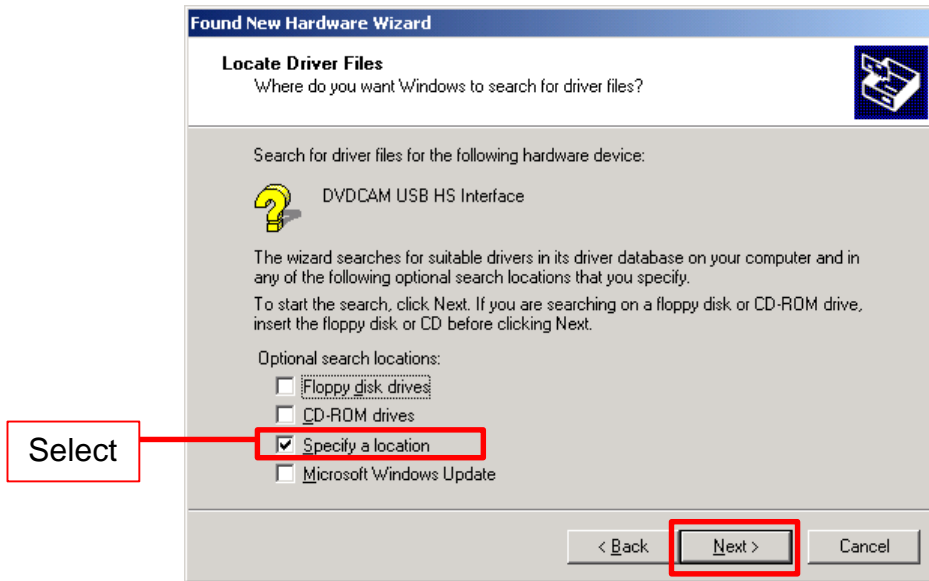
5. When the **Found New Hardware Wizard** dialog box appears to install the USB driver, click **Next**.



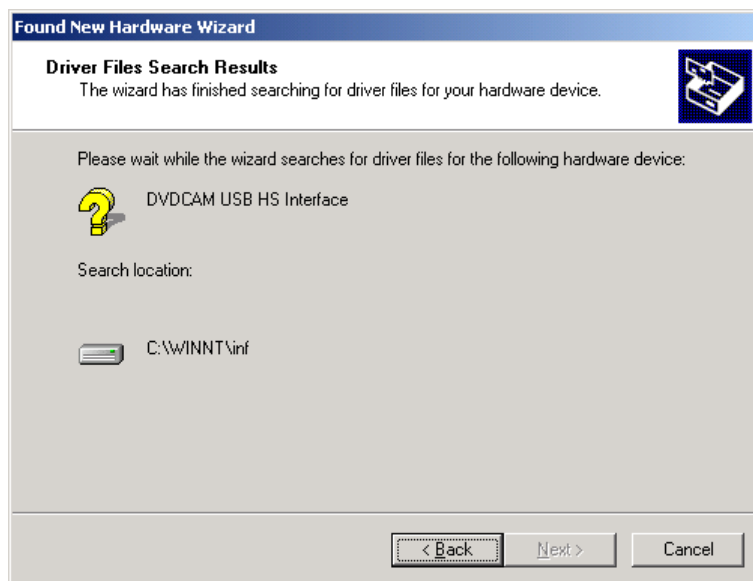
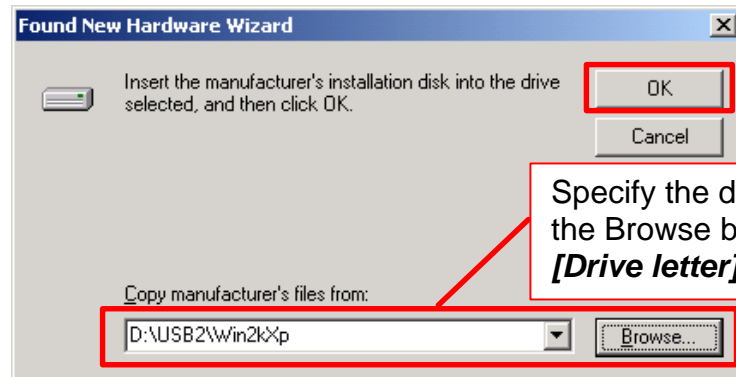
6. Select **Search for a suitable driver or my device (recommended)**, and then click **Next**.



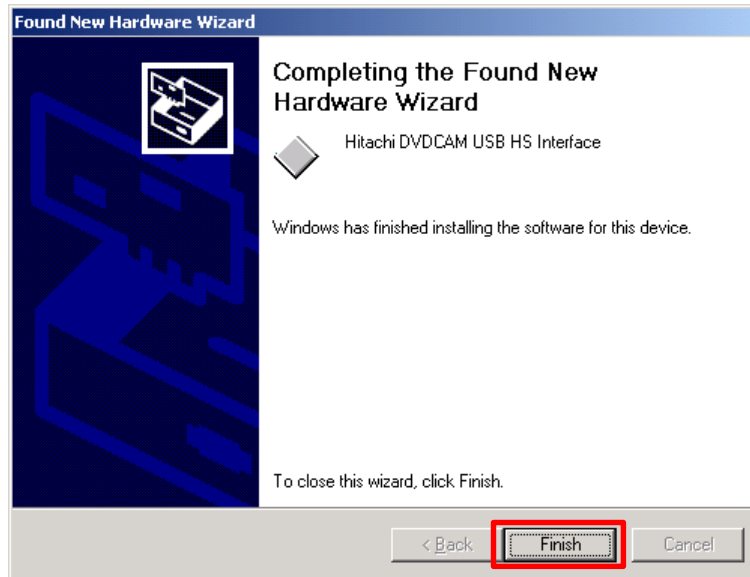
7. Select the **Specify a location** check box and clear the **Floppy disk drivers**, **CD-ROM drivers**, and **Microsoft Windows Update** check boxes, and then click **Next**.



8. Click **Browse**, specify the **Win2kXp** folder under the **USB2** folder from the DVDCAM Software CD-ROM, and click **OK**. The USB driver installation starts.

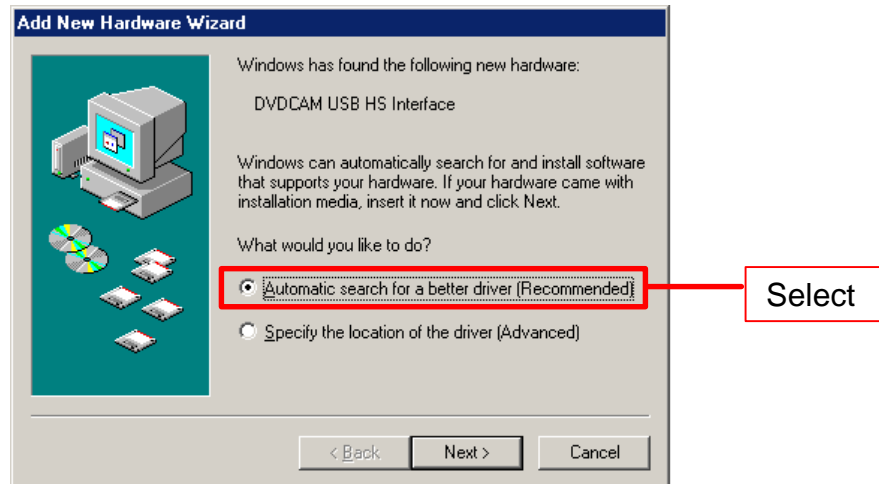


9. When the USB driver installation finishes, click the **Finish** button.

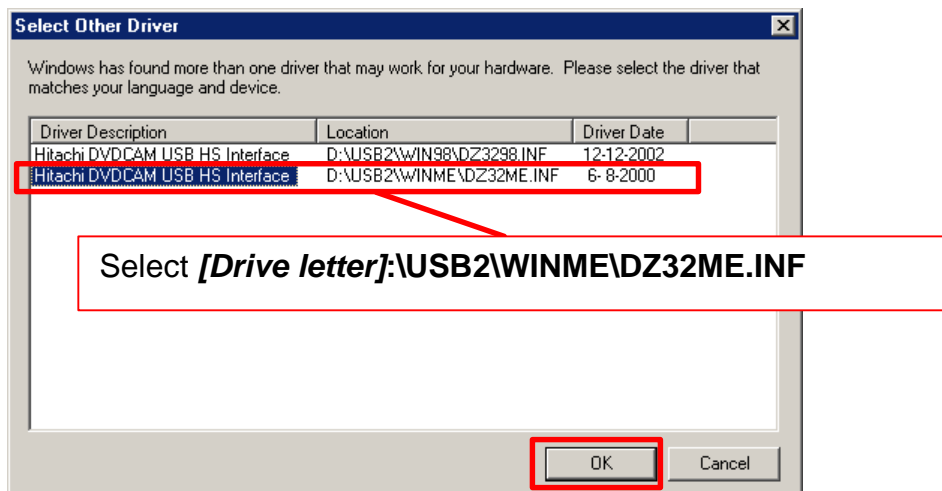


Windows Me

5. The Add Select **Automatic search for a better driver (Recommended)**, and then click **Next**.



6. In the **Select Other Driver** dialog box, select the driver **[CD-ROM drive letter]:\USB2\WINME\DZ32ME.INF** listed in the **Location**, and then click **OK**.

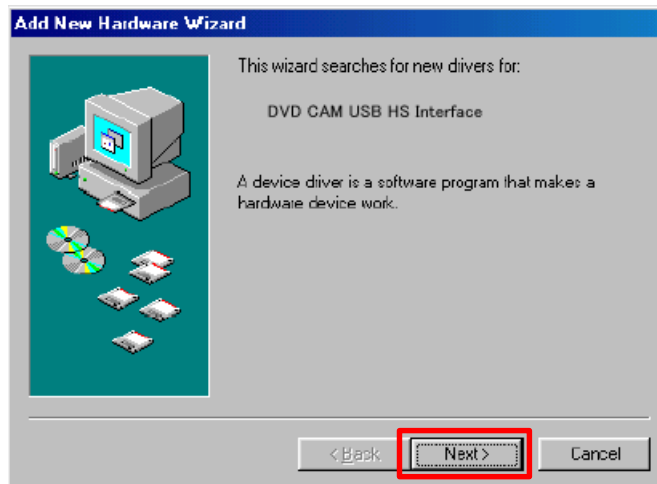


7. When the USB driver installation finishes, click the **Finish** button.

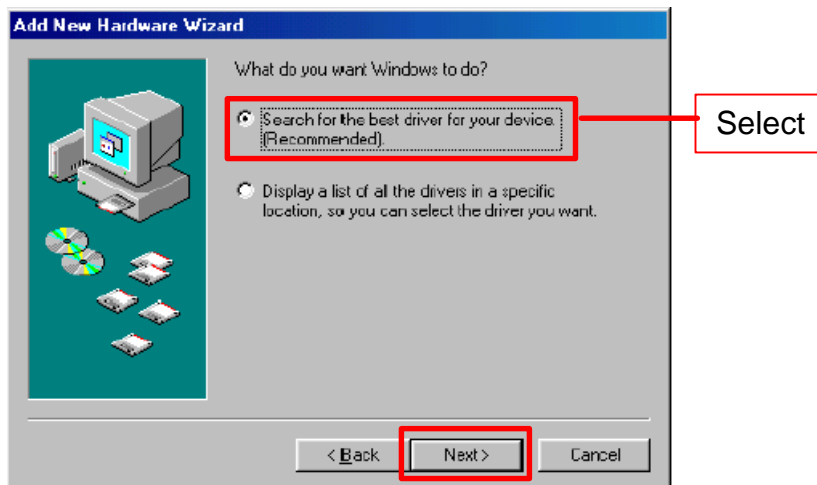


Windows 98 Second Edition

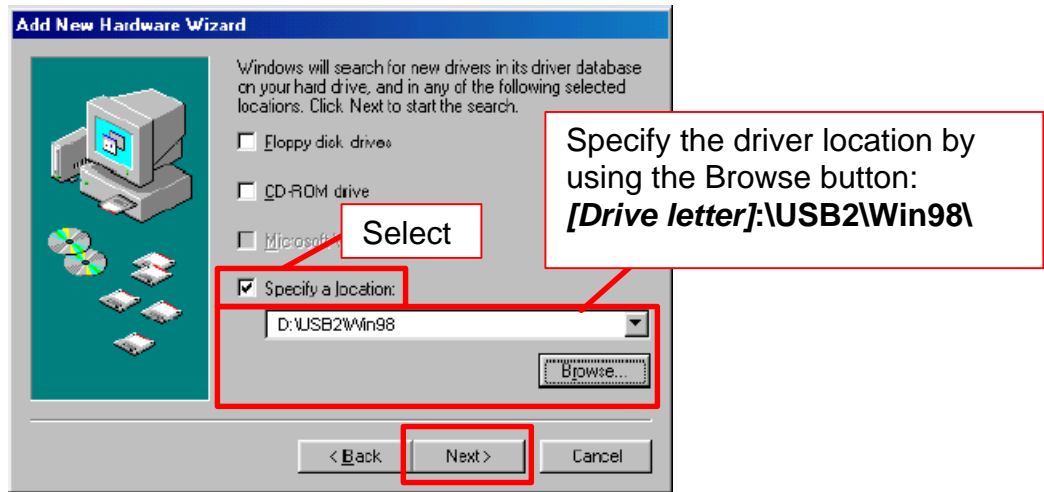
5. Click **Next**.



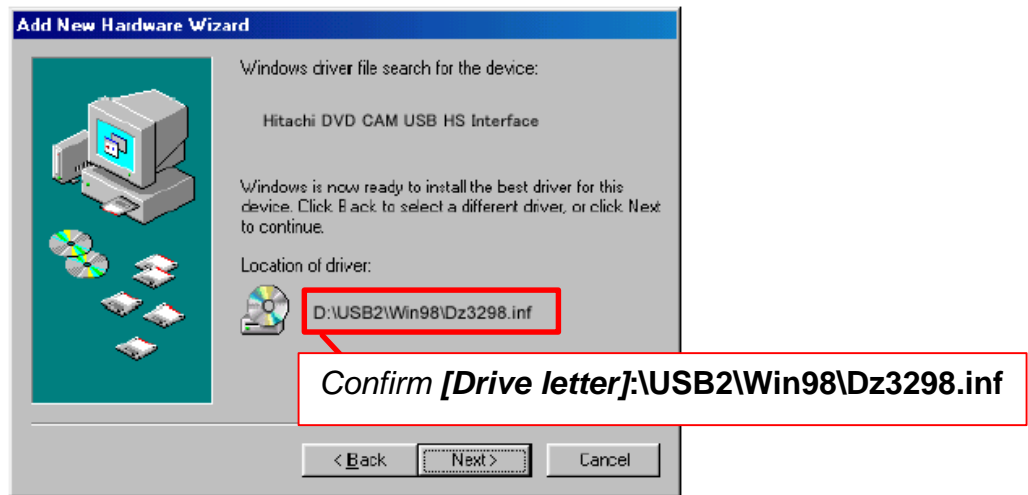
6. Select **Search for the best driver for your device (Recommended)**, and then click **Next**.



7. Clear the **Floppy disk drives** and **CD-ROM drive** check boxes. Select the **specify a location** check box, and click the **Browse** button.
8. Specify the **Win98** folder under the **USB2** folder from the DVDCAM Software CD-ROM, and click **Next**.



9. Confirm **\USB2\Win98\Dz3298.inf** following the CD-ROM drive letter has been specified (e.g. **D:\USB2\Win98\Dz3298.inf**),



10. When USB driver installation finishes, click the **Finish** button.

