

DVD CAM Software Support Center

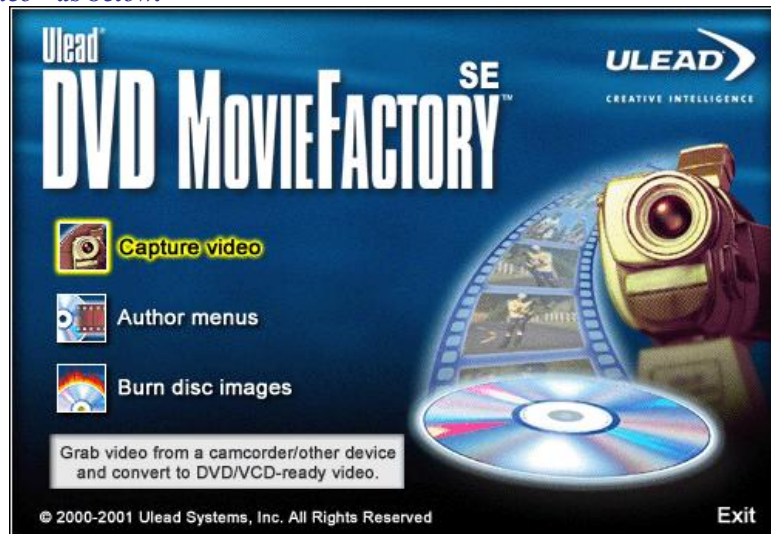
Software Tutorials


DVDMovieFactory SE for Hitachi DVD video camera / recorder Capture Images via USB cable connection

1. Make sure that Hitachi DVD video camera / recorder has DVD-RAM or DVD-R disc in the drive and powered on to the position at "VIDEO" or "PHOTO", is connected with PC via USB cable.
2. Start DVDMovieFactory SE. The icon may look like:




Select "Capture Video" as below.

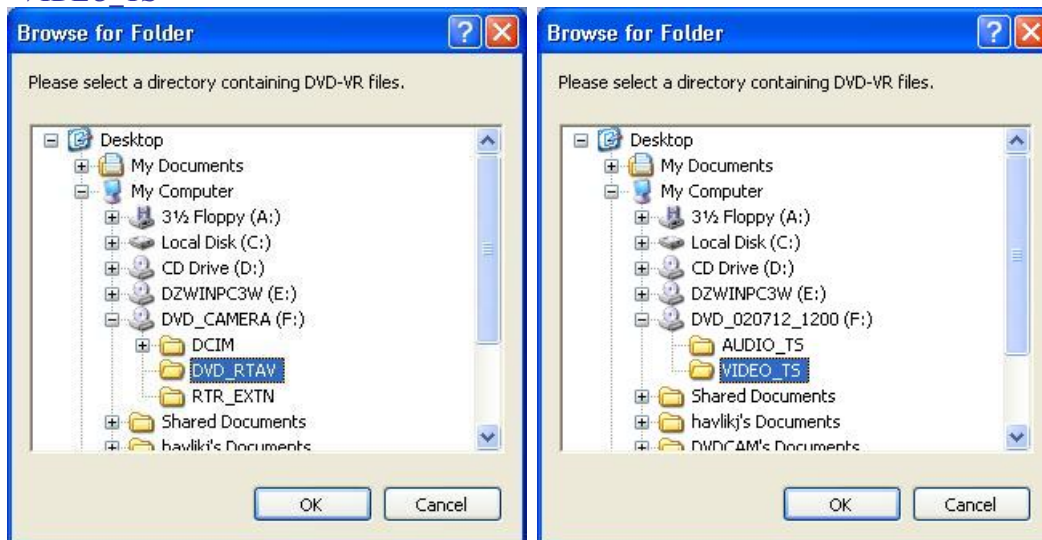


3. At the initial operation, clicking "Capture plug-in" icon  and choose "Ulead DVD-VR plug-in" and select OK. When the OK button is disabled, "Ulead DVD-VR plug-in" has been set as default and already in effect.

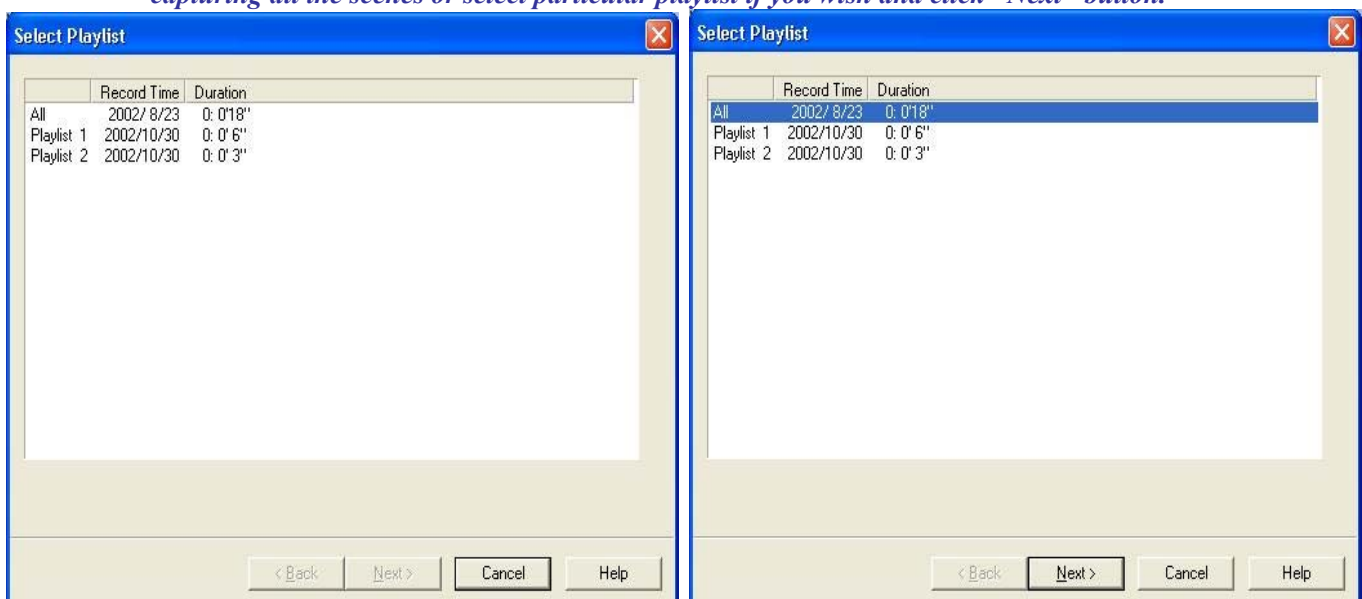


Capture folder  : The folder specified to store/save moving images(MPEG) and still images(JPEG) after capturing.

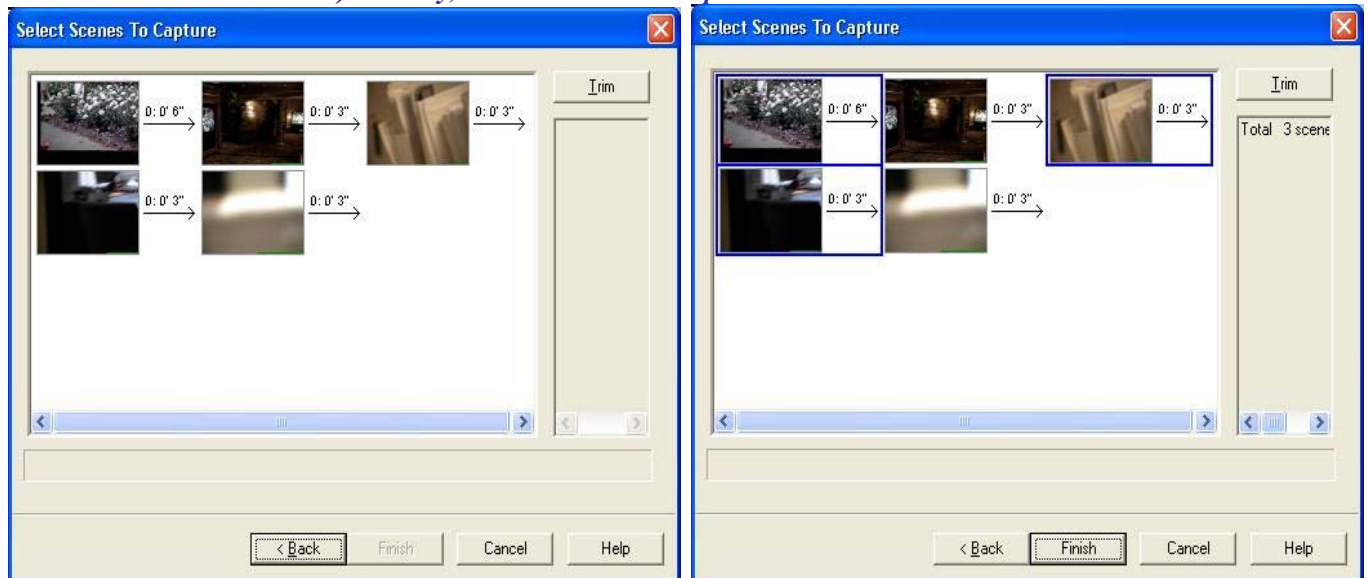
Capture settings  : In pull-down menu, "Video Properties", can be selected when browsing the folder to capture the image files from. The dialog box on the right shows at capture image browsing DVD-RAM disc specifying "DVD_RTAV" folder and the one on the left is for DVD-R specifying "VIDEO_TS"



4. When clicking "Capture Video" icon  initially, the dialog box, "Browse for Folder", as above will be shown. Otherwise, the select playlist dialog box below appears. Select 'All' from listing if capturing all the scenes or select particular playlist if you wish and click "Next" button.



5. The *Select Scenes To Capture* dialog box appears. Select the thumbnail(s)/scene(s) to capture from the selections and click "Finish" to start capturing. (To select more than one scenes, click the scenes with the mouse pressing Ctrl key down and to select more than one scenes in sequence, press the Shift key down to click the scenes.) Finally, select "Finish" to capture.



**It may take some time for capturing.*
